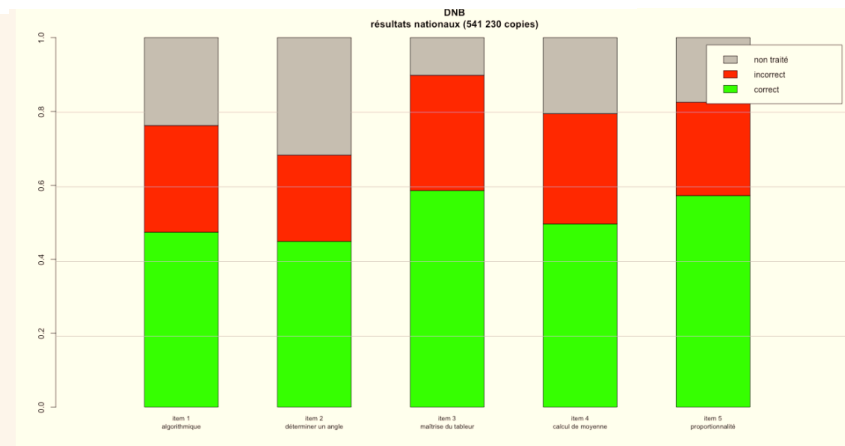
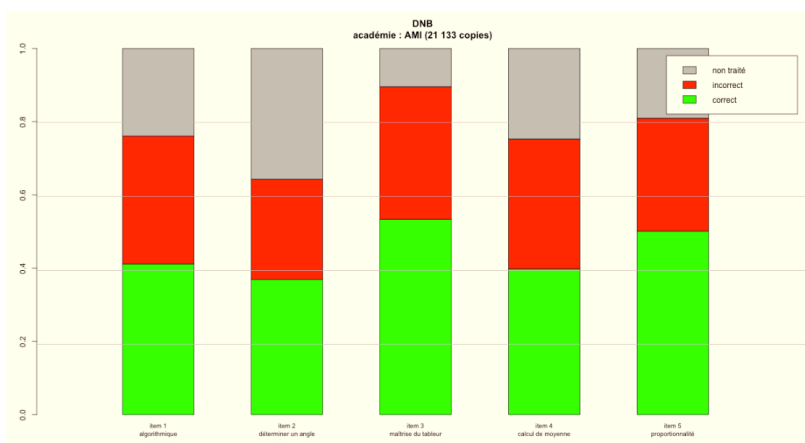


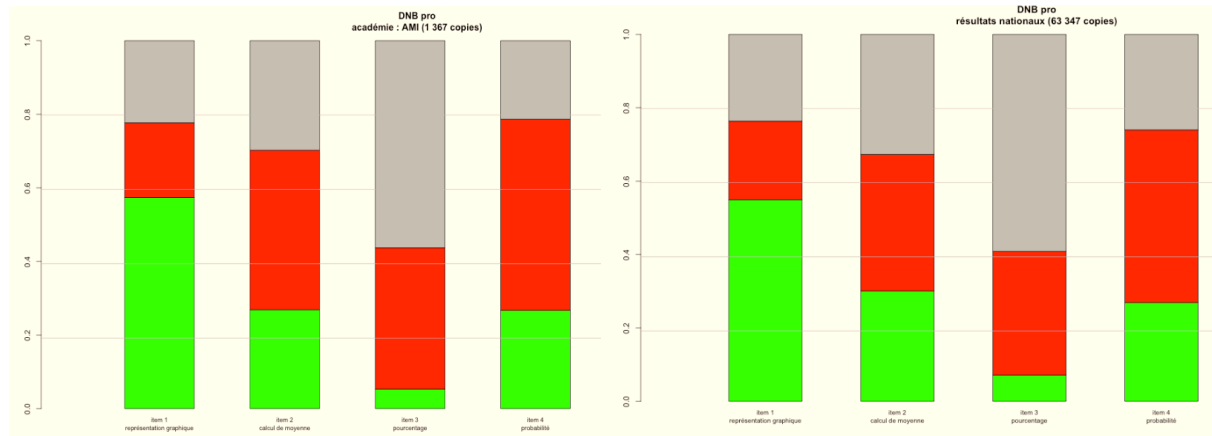
# RELEVÉ DES ACQUIS

## I) DNB

Relevé n°1	Exercice 2 question 3.a. Comprendre un algorithme	Démarche correcte : l'élève trouve 80 pixels.
Relevé n°2	Exercice 4 question 2. Utiliser la trigonométrie	L'acquis est correct si l'élève reconnaît l'emploi d'une fonction trigonométrique et écrit le rapport de longueurs correspondant. S'il obtient $26^\circ$ autrement, on considère l'item non traité
Relevé n°3	Exercice 6 question 1.b Maîtrise du tableur	La démarche est considérée comme correcte si le candidat si le candidat choisit la bonne formule.
Relevé n°4	Exercice 6 question 2.a. Calculer une moyenne pondérée	Une erreur d'utilisation de la calculatrice n'est pas prise en compte.
Relevé n°5	Exercice 7 question 1. Utiliser la proportionnalité	On teste la compétence Calculer (situation de proportionnalité) La démarche est considérée comme correcte si le candidat pose le bon calcul

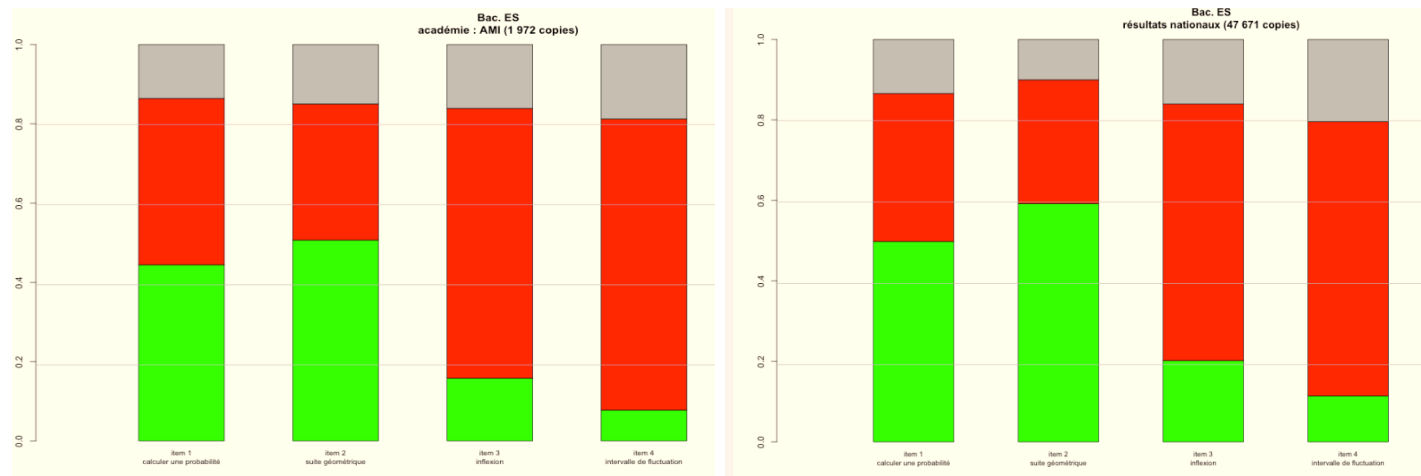


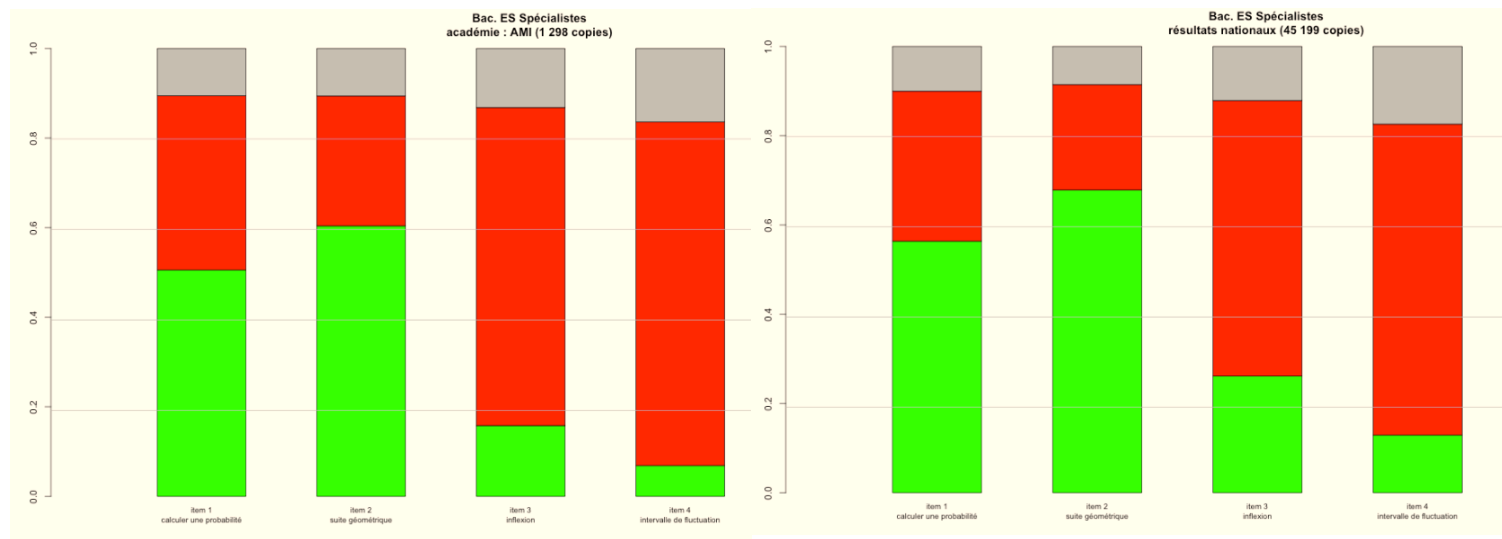
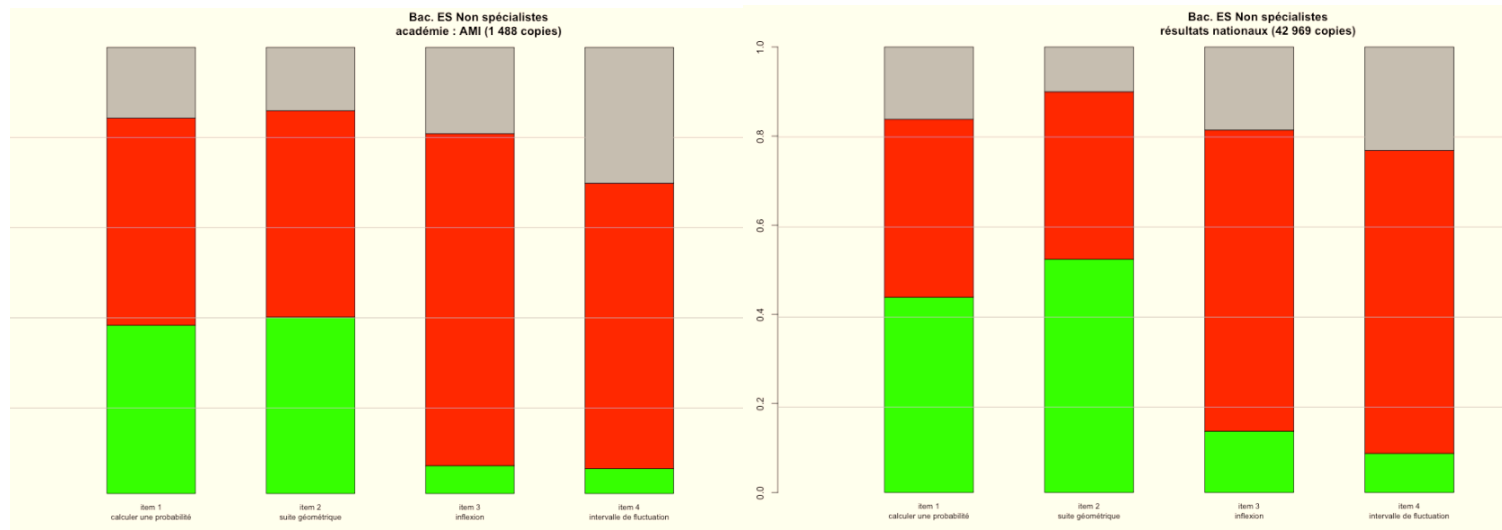
## II) DNB PRO



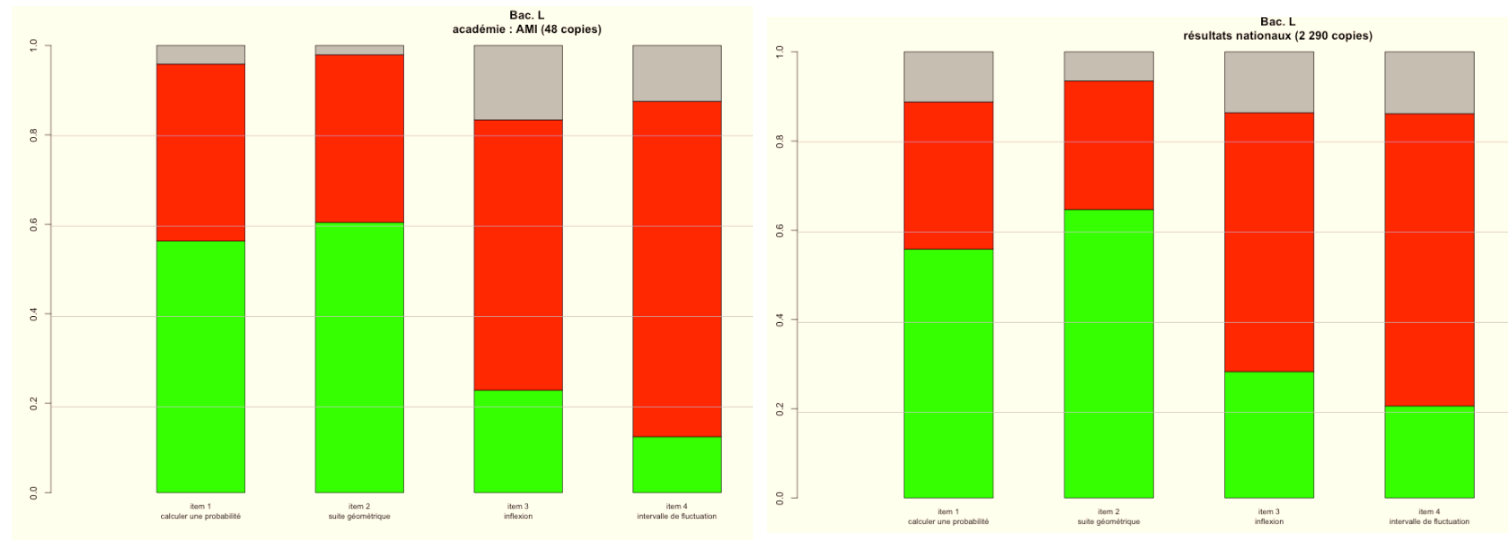
## III) BAC

### 1) ES

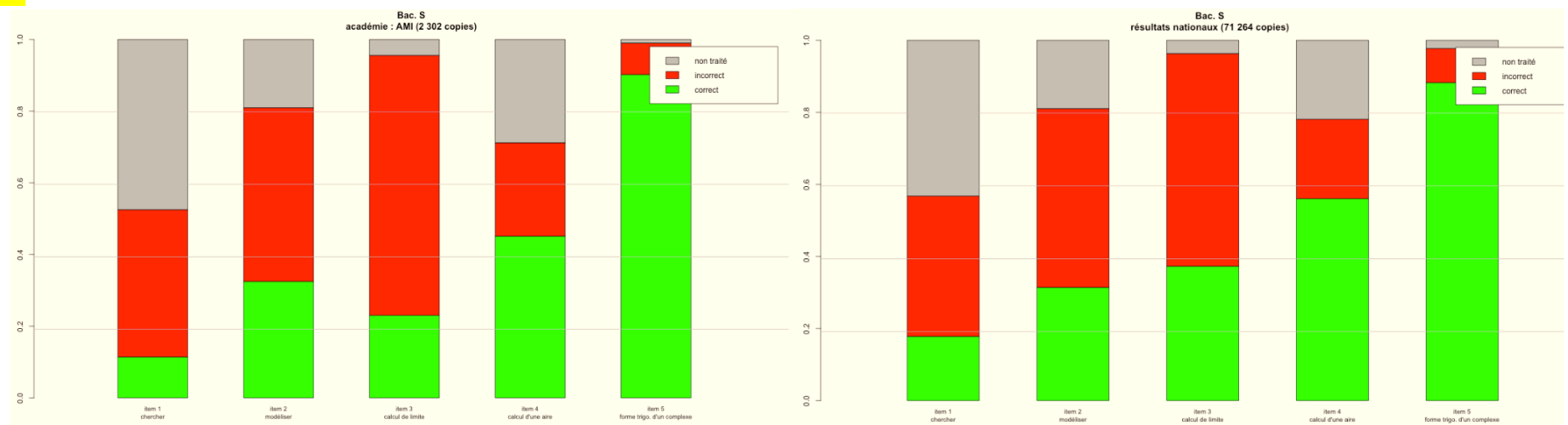


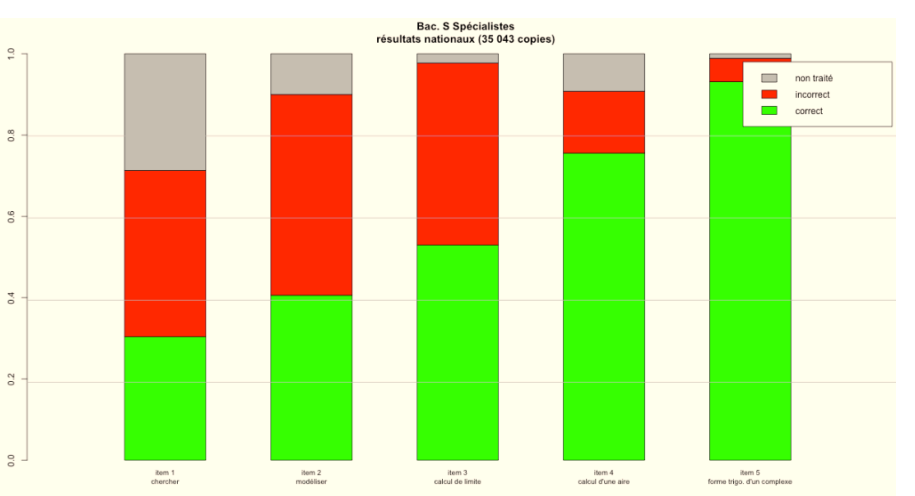
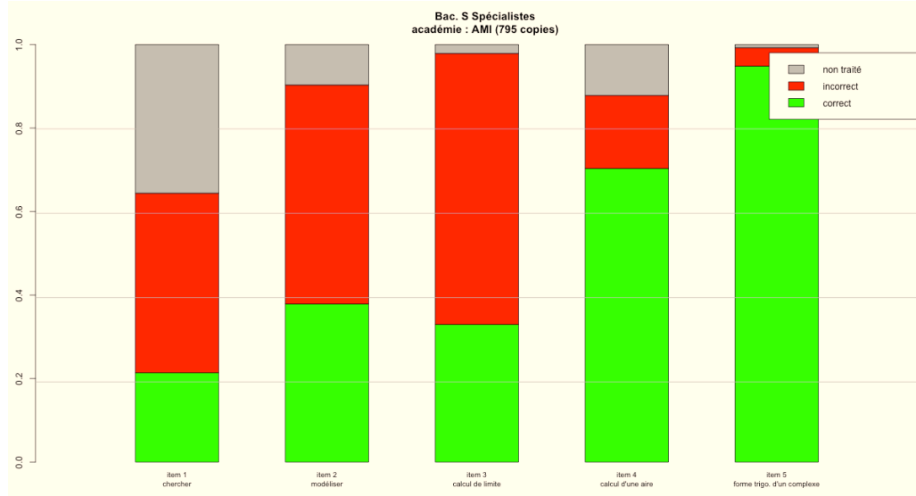
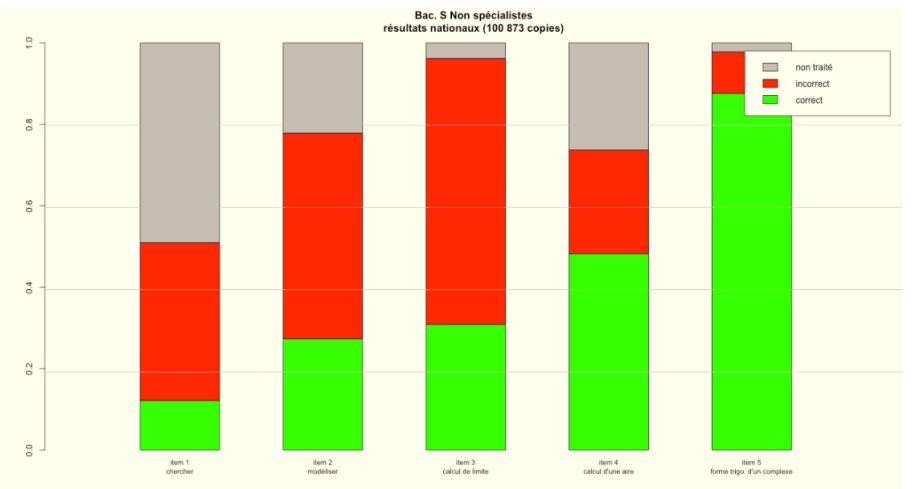
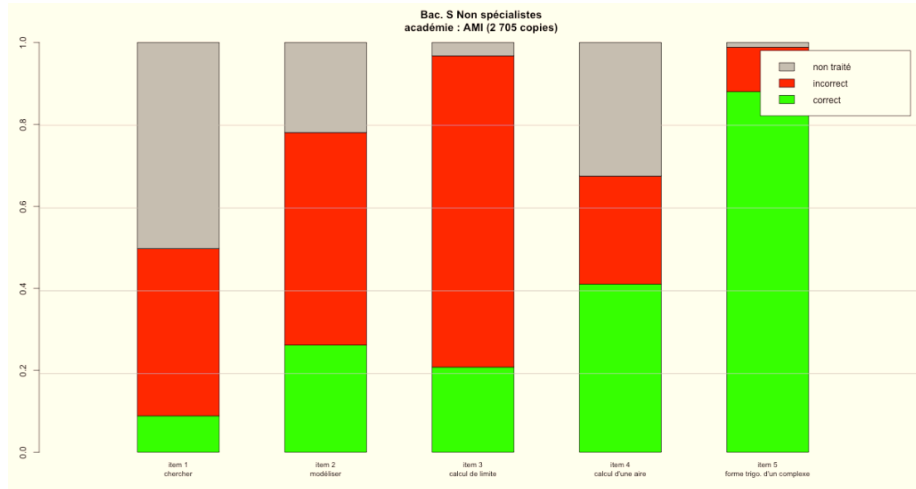


## 2) L

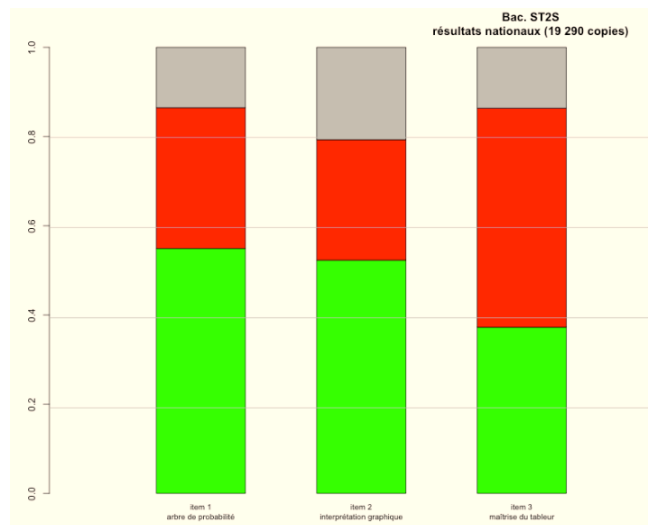
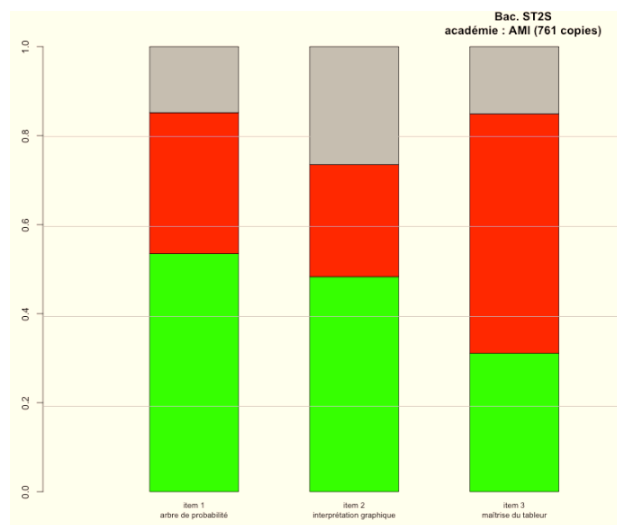


## 3) S

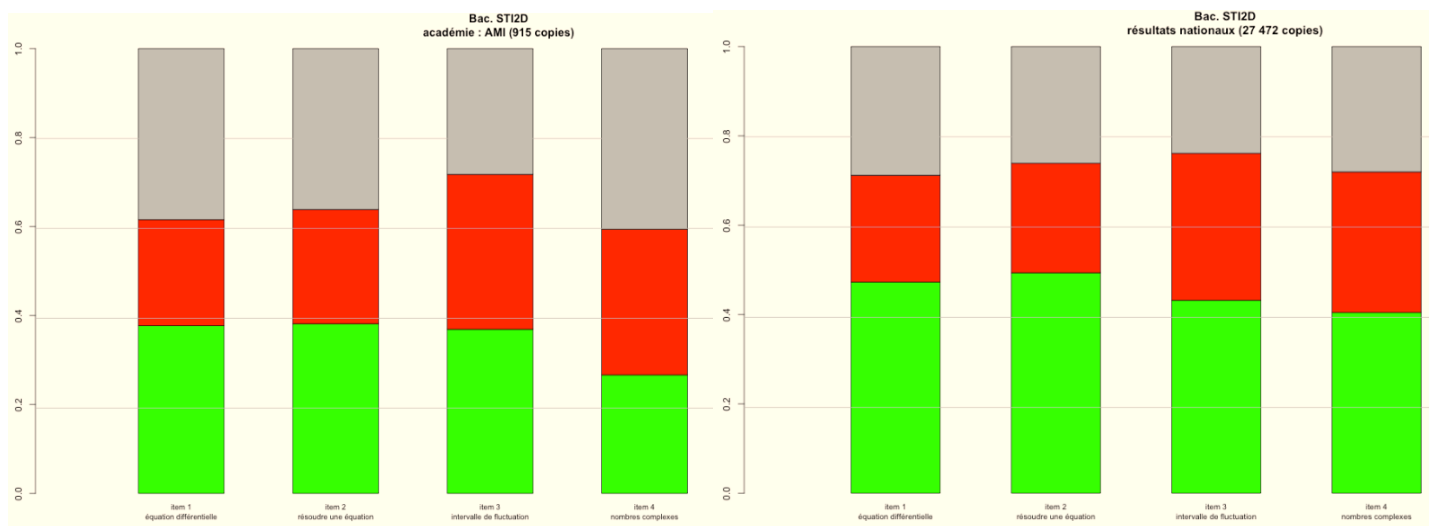




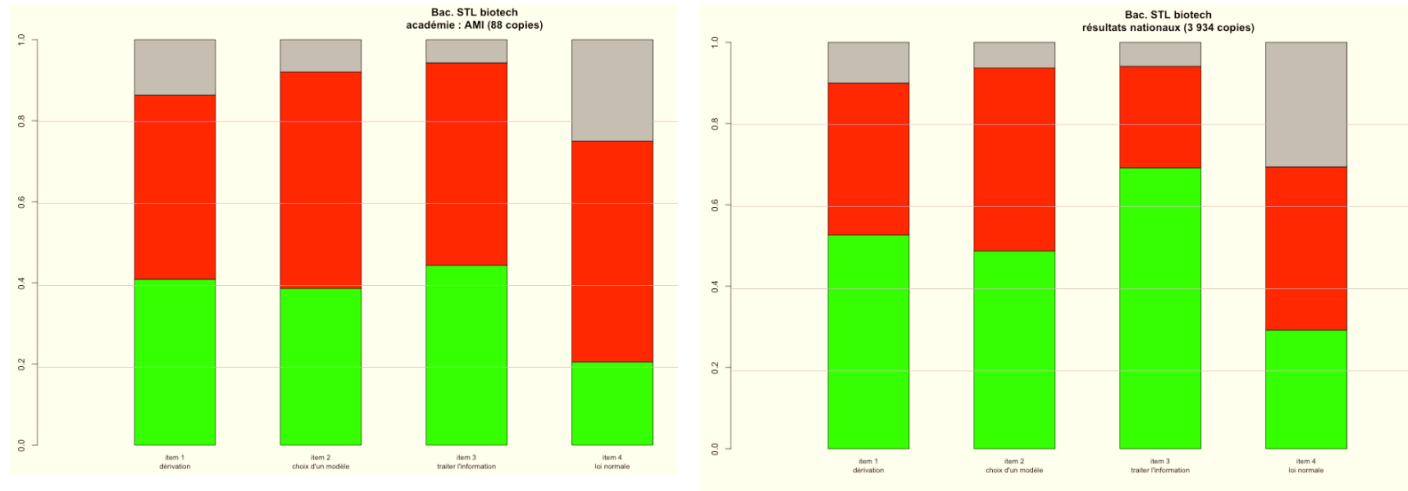
## 4) ST2S



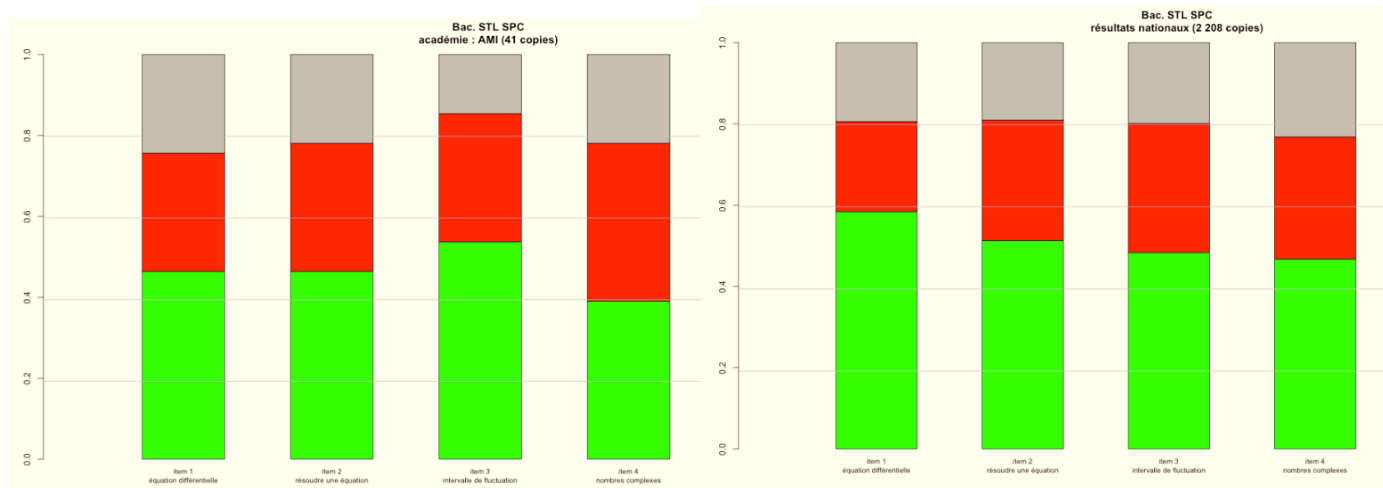
## 5) STI2D



## 6) STL Biotech



## 7) STL SPC



# 8) STMG

